



AIR CONDITIONING



REFRIGERATION



HEATING



Mini Tank

CONDENSATE REMOVAL PUMP



The new and improved Mini Tank pump can be wall mounted, floor mounted, in-pan or suspended on M8 / M10 rod. Using piston technology this is a compact, powerful and multi functional tank pump.



35L/h max. flow



15m max. rec. head (flow rate 10L/h)

KEY FEATURES

- Four ways to install
- Compact & discreet
- Can be located in drain pan
- Easy maintenance

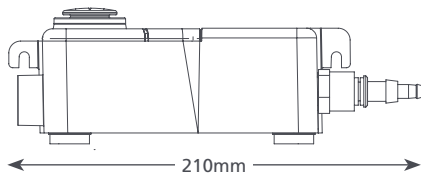
SUITABILITY

- Up to 46kW / 157,000Btu/h
- Ducted units; Floor standing & chassis units; Cassette units

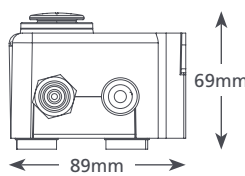
✓ Perfect for... Installation versatility



0.57 kg

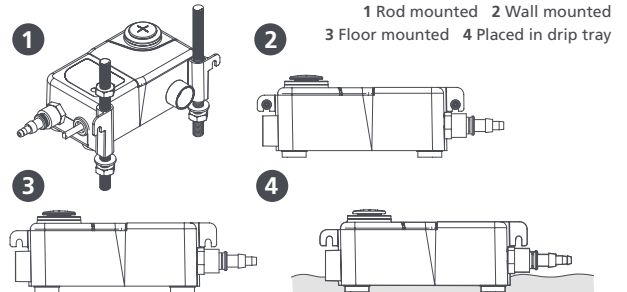


210mm



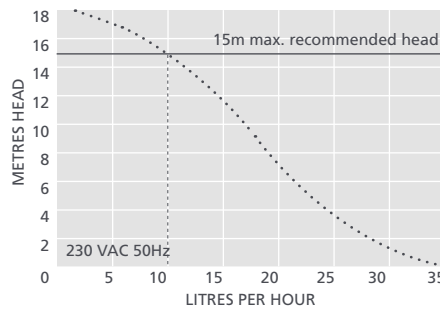
69mm

89mm



MINI TANK @ 230 VAC 50Hz

Max. flow	35L/h @ 0m head
Max. rec. head	15m
Tank capacity	0.24L
dB(A) @ 1m	35
Power supply	230 VAC, 0.1A, 16W, 50/60Hz
Rated Class	Non continuous II appliance <input type="checkbox"/>
Max. unit output	46kW / 157,000Btu/h
Max. water temp	40°C / 104°F
Inlets	x2 22mm, 12mm & 27mm
Outlets	6mm & 10mm
IP Protection	IP65
Safety switch	3.0A Normally closed
Thermal protection	✓
Fully potted	✓
Self priming	n/a



SUGGESTED XTRA ACCESSORIES

Description	Part No.
Tank pump connector 16mm-21mm	FP2011
Tube To Soil Stack Adaptor	FP2038
Vinyl Tube Braided 1/4" (6mm)	AX5100



For more installation accessories take a look at our Aspen Xtra range

MINI TANK OPTIONS

Mini Tank	FP1056/2
-----------	----------

IN THE BOX

Mini Tank pump (including hard wired 1.5m power cable) • x2 Rubber adaptors (21.5mm & 31mm) • Anti siphon device • Fixing kit • Install manual

Download manual at aspenpumps.com

View install video at aspenpumps.com

Information correct at time of going to press.



aspenpumps.com

+44 (0)1323 848842

sales@aspenpumps.com

reliable | silent | simple